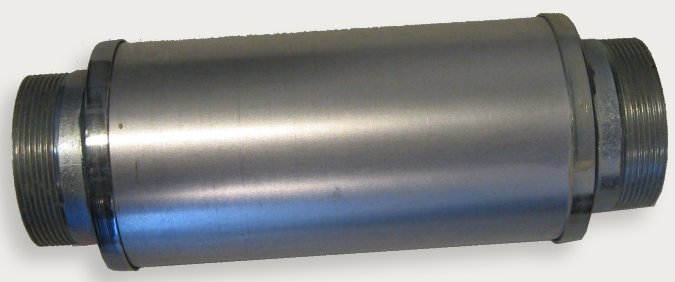
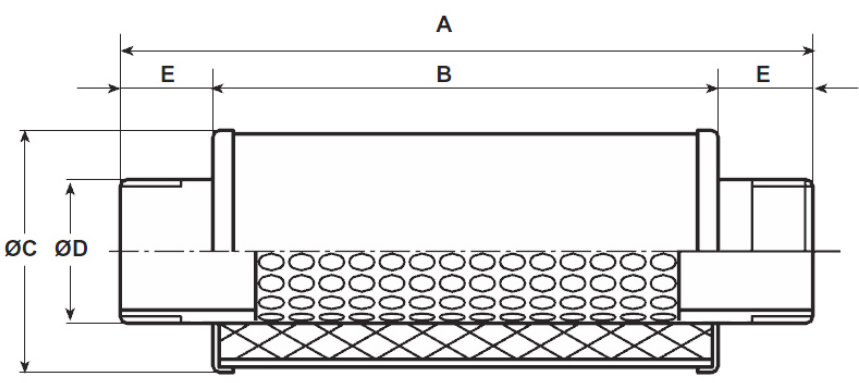


Silencers EGD series

The in-line silencers from Induvac are on both sides equipped with a gas thread connection. The silencers are available with a connection of 1¼" G up to 4" G and can be used in the suction or discharge side of the side channel blower. The silencers are made of sheet steel with an PU absorbing material. Depending on the way how the dampers are installed, a considerable reduction is feasible.



Induvac Ref	R "G	A mm	B mm	C mm	E mm	Weight kg
EGD.125	1"1/4	240	140	70	50	0,5
EGD 15	1"1/2	230	170	80	30	0,6
EGD 2	2"	260	200	90	30	0,7
EGD 25	2"1/2	260	200	90	30	0,7
EGD 3	3"	570	400	152	85	2,5
EGD 4	4"	480	400	152	124	3,9



No rights can be derived from the sketches, dimensions and contents of this data sheet. The data is for information purposes only. Induvac reserves the right to change or modify the data. No complaints can be made about this.