



Induvac BV
Postbus 689
2700 AR Zoetermeer
info@induvac.com
www.induvac.com

VC 330-710 VC 340-710



Zijkanaalventilatoren

The standard **VACOM®** design, with housing and impeller made of aluminum alloy, is a direct drive configuration, with a dynamically balanced impeller, fitted directly on the motor shaft. The impeller rotates inside of the stator housing with a very small clearance. Larger models include housings in cast iron. The absence of lubricants guarantees a 100% oil free vacuum or compression. Construction features of the **VACOM®** side channel blower are the very reliable operation and low maintenance. **VACOM®** blowers are directly driven, impellers fixed directly on the drive shaft. Impeller bearing is installed in the front cover and easily to assemble and disassemble. Machines are small and lightweight. **VACOM®** blowers are already available with differential pressures up to 700 mbar.



Some features of the side channel blowers are;

- Available from stock
- Almost free of maintenance
- Low power consumption
- Oil free compression, no oil pollution in the medium

Technical data	VC 330-710	VC 340-710
Maximum capacity	318 m ³ /h	318 m ³ /h
Maximum pressure	290 mbar	330 mbar
Maximum vacuum	270 mbar	290 mbar
Installed power	3,0 kW	4,0 kW
Voltage	230-400 V	400-690 V
Sound level	69 dB(A)	69 dB(A)
Weight	36 kg	40 kg
Connection	2 " G	2 " G

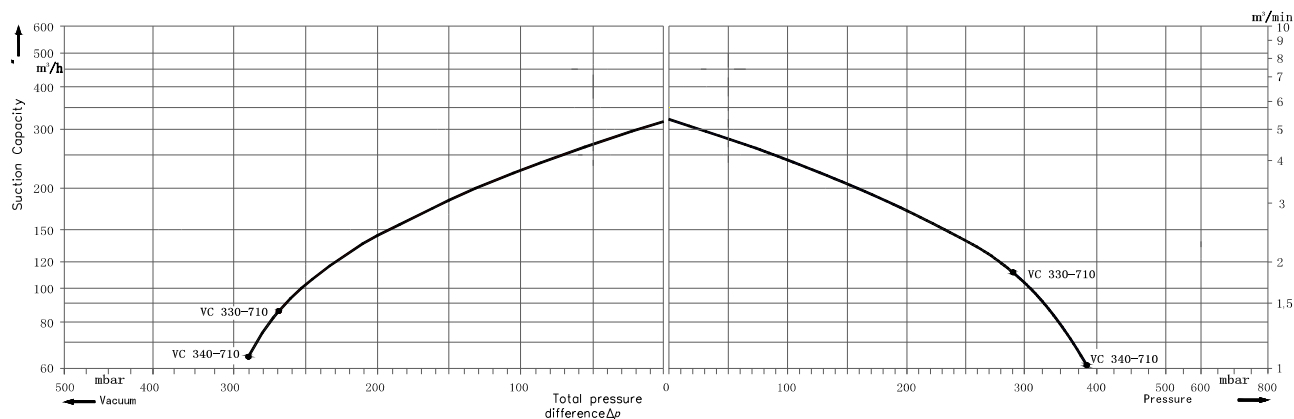




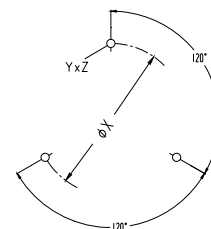
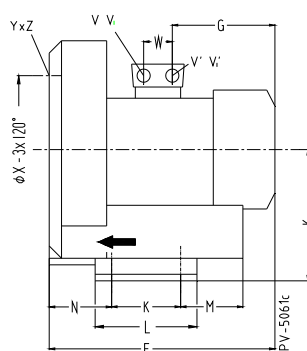
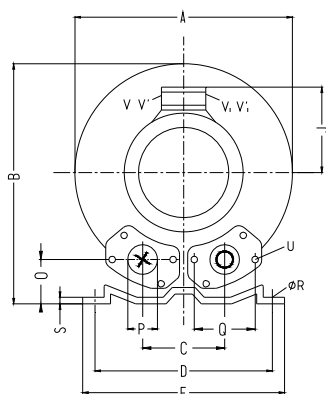
Induvac BV
Postbus 689
2700 AR Zoetermeer
info@induvac.com
www.induvac.com



Zijkanaalventilatoren



Curves are valid for dry air, with a temperature of 15°C on the inlet side and a pressure of 1013 mbar(a) on the inlet or discharge side connection (respectively for over and under pressure) The tolerance on capacity is +/- 10%.



VC 330-710 / VC 340-710

A	B	C	D	E	F	G	H	J	K	L	M	N	O
382	384	125	290	325	409/432	188/209	197	135/148	140	180	84	109	54
P	Q	Ø R	S	U	V (1~)	V' (1~)	V ₁ (3~)	V' ₁ (3~)	YxZ	Ø X	W		
55	83	15	4,5	M8x17	M32x1,5	M32x1,5	M32x1,5	M32x1,5	M10x20	240	42		

