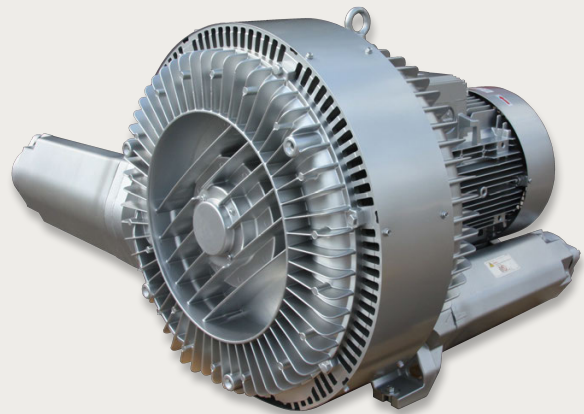




## Side channel blower 820 series

The standard VACOM® design, with housing an impeller made of aluminum alloy, is a direct drive configuration, with a dynamically balanced impeller, fitted directly on the motor shaft. The impeller rotates inside of the stator housing with a very small clearance. The absence of lubricants guarantees a 100% oil free vacuum or compression. Construction features of the VACOM® side channel blower are the very reliable operation and low maintenance. VACOM® blowers are directly driven, impellers fixed directly on the drive shaft. Impeller bearing is installed in the front cover and easily to assemble and disassemble. Machines are small and lightweight. VACOM® blowers are already available with differential pressures up to 700 mbar and capacities of 2000 m<sup>3</sup>/ hr.



---

### Features

- ♦ Available from stock
- ♦ Almost free of maintenance
- ♦ Low power consumption
- ♦ Oil free compression, no oil in the medium
- ♦ Made of aluminum, so low weight and high corrosion resistance.

### Accessories

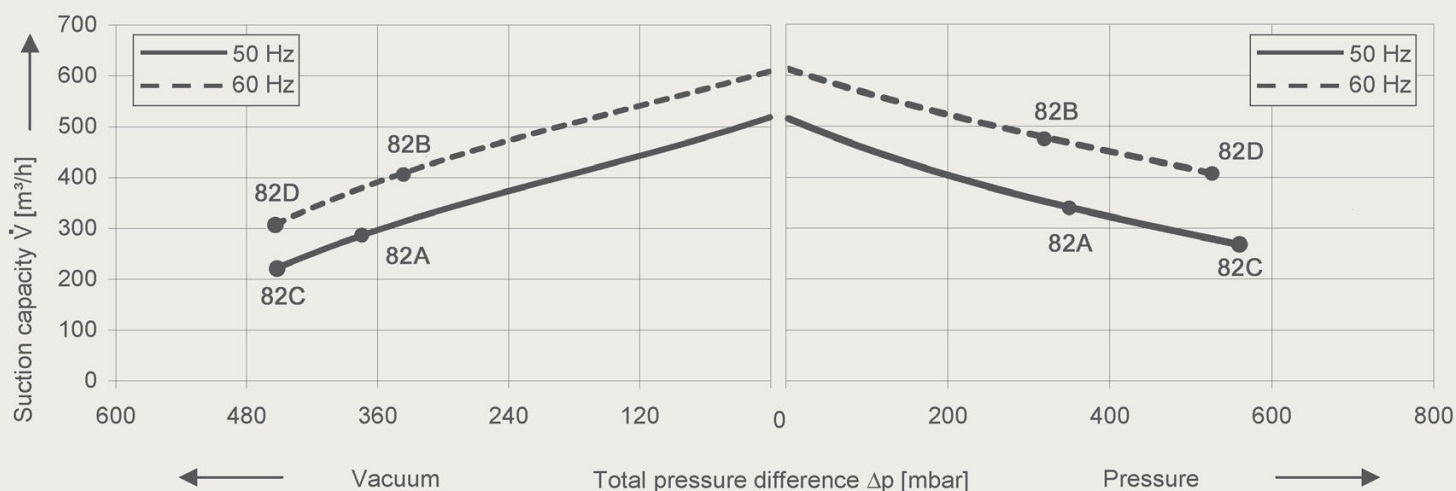
- ♦ Suction filter TGF ( for vacuum)
- ♦ Suction filter VCFT (for compression)
- ♦ Pressure relief valve DB
- ♦ External silencer EGD
- ♦ Fittings
- ♦ Various: change valve, pressure gauge, non return valve



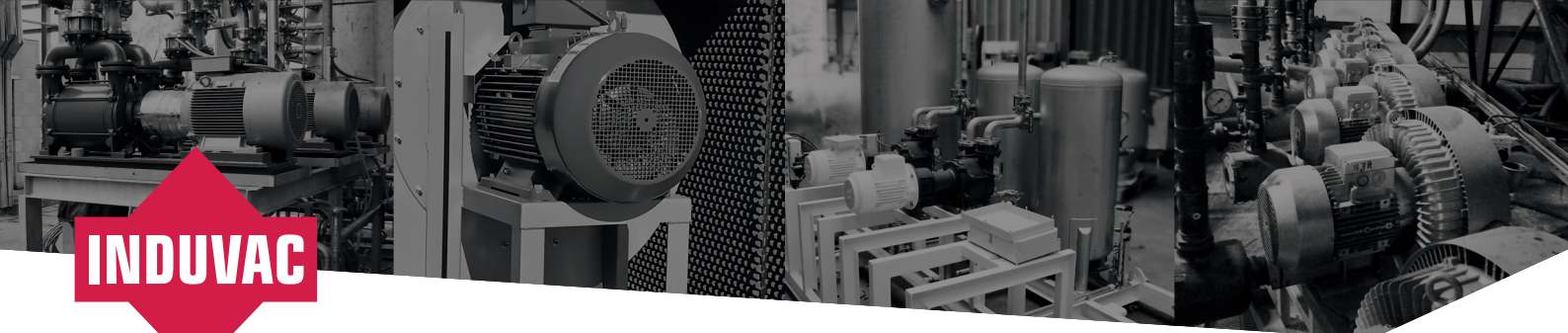
## Technical data

Type No.	Curve No.	Freq. Hz	Power kW	Voltage		Current			Capacity m <sup>3</sup> /hr	Pressure difference		Sound level dB(A)	Connec- tion "G	Weight kg
				V		A				Vacuum mbar	Pressure mbar			
VC 375-820	82A	50	8,60	380-420 Δ	660-725 Y	15,50 Δ	8,90 Y	520	-380	360	74	2,5	103	
		60	9,90	460-520 Δ	790-870 Y	15,40 Δ	8,80 Y	620	-330	320	78	2,5	103	
	82B	50	7,50 IE3	400 Δ	690 Y	13,50 Δ	7,80 Y							
		60	8,60 IE3	480 Δ		Y	12,90 Δ							
VC 311-820	82C	50	12,60	380-420 Δ	660-725 Y	23,30 Δ	13,50 Y	520	-460	570	74	2,5	135	
		60	14,50	460-520 Δ	790-870 Y	23,00 Δ	13,30 Y	620	-460	540	78	2,5	135	
	82D	50	11,00 IE3	400 Δ	690 Y	19,60 Δ	11,30 Y							
		60	12,60 IE3	480 Δ		Y	18,70 Δ							

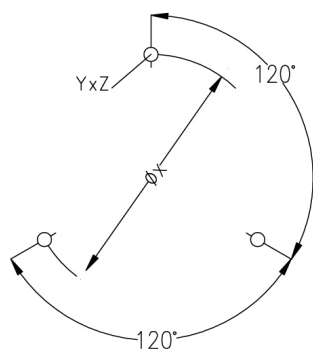
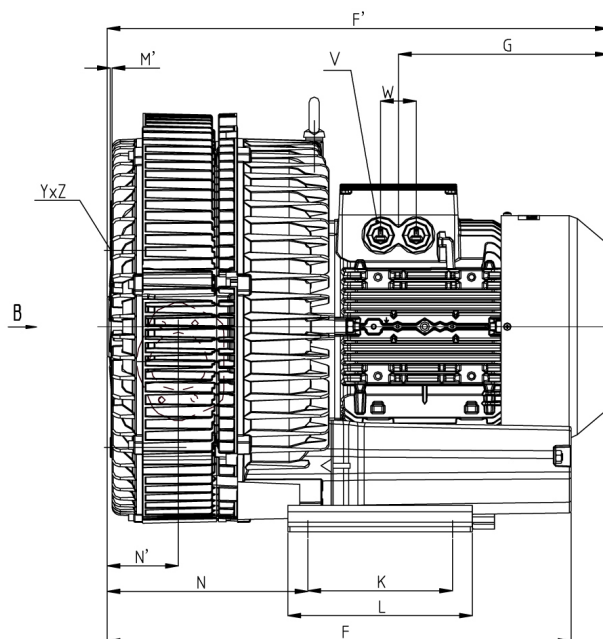
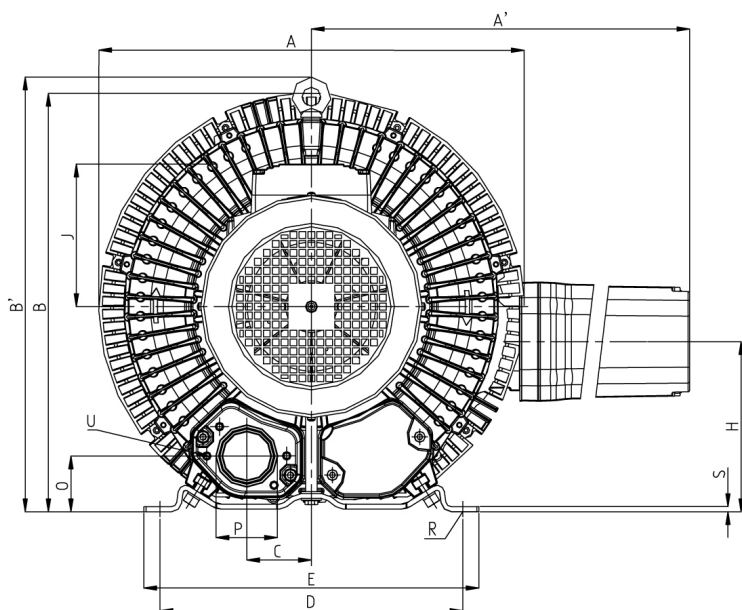
## Curves



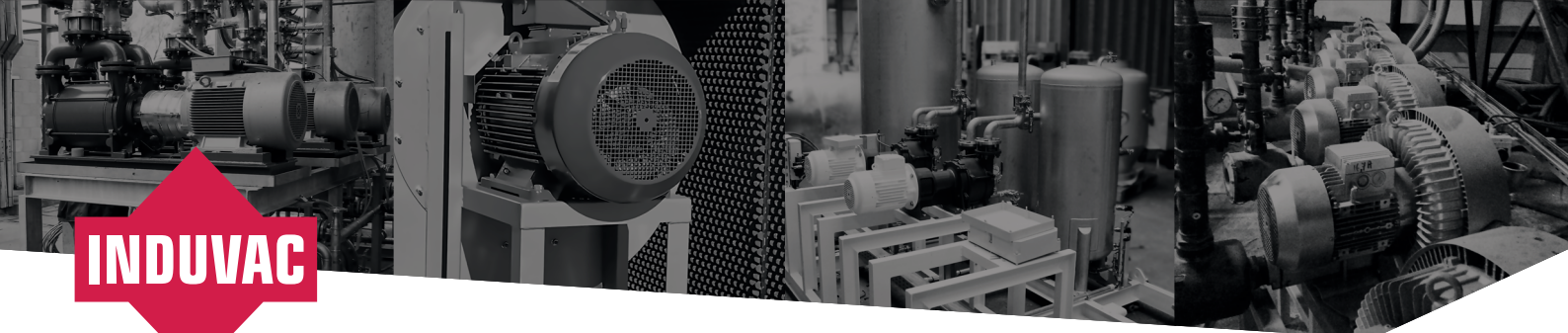
Curves are valid for dry air, with a temperature of 15°C at the inlet and a pressure of 1013 m bar(a) at the inlet or outlet connection (for over- or under-pressure application respectively). The tolerance on capacity is +/- 10%. No rights can be derived from the sketches, dimensions and contents of this data sheet. The data is for information purposes only. Induvac reserves the right to change or modify the data. No complaints can be made about this.



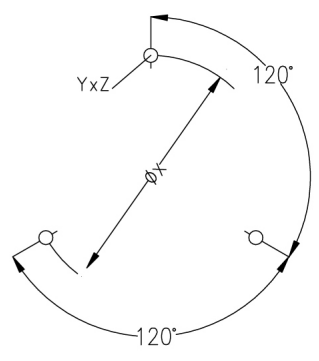
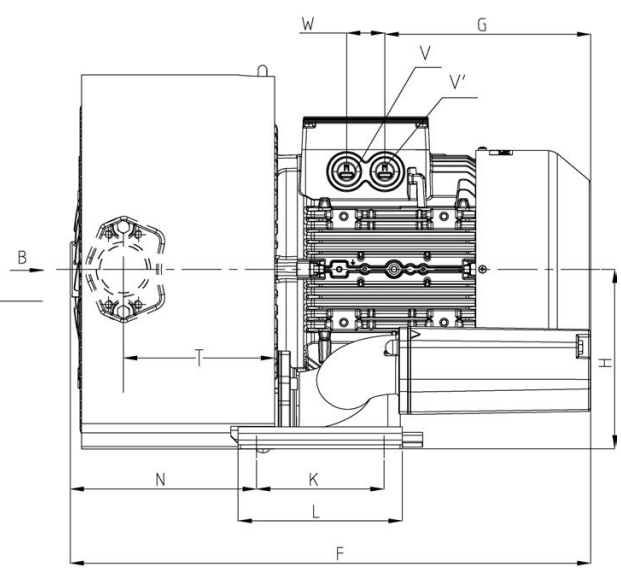
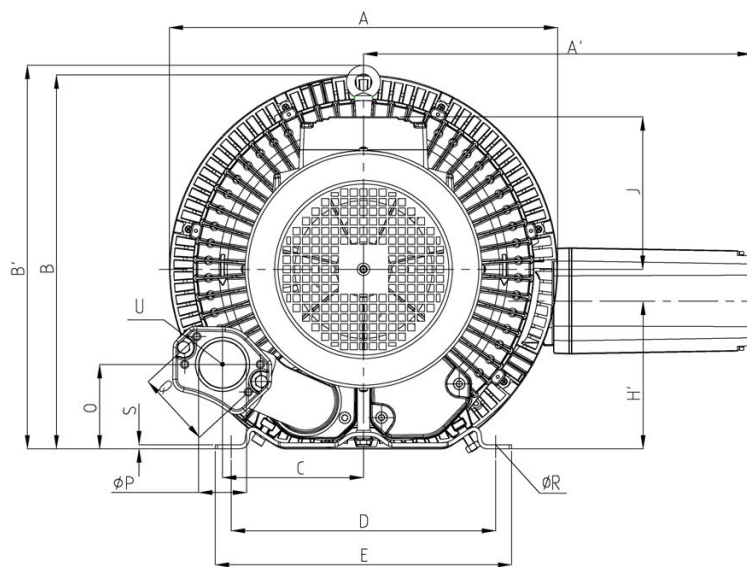
# Dimensions



Curve No.	Type	A	A'	B	B'	C	D	E	F	F'	G	H	H'	J
82A / 82B	VC 375-820	500	549	490	509	76	356	394	545	589	226	240	199	148
Curve No.	Type	K	L	N	N'	O	ØP	ØR	S	V	W	ØX	YxZ	X-holes
82A / 82B	VC 375-820	170	217	236	84	65	G 2 1/2"	15	6	4 x M32 x 1.5	42	286	M12 x 20	51.4°/120°/240°



# Dimensions



Curve No.	Type	A	A'	B	B'	C	D	E	F	F'	G	H	H'	J
82C / 82D	VC 311-820	500	549	490	509	152	356	394	545	694	318	240	199	197
Curve No.	Type	K	L	N	N'	O	ØP	ØR	S	V	W	ØX	YxZ	X-holes
82C / 82D	VC 311-820	170	217	212	84	105	G 2 1/2"	15	6	4 x M32 x 1.5	54	286	M12 x 20	51.4°/120°/240°